

Federally Qualified Health Centers: THE HEART OF HEALTHY COMMUNITIES

**650
SITES**

across New York State

serve **2 MILLION
PATIENTS**




CHC NYS DEFINING NEW DIRECTIONS
Community Health Care Association of New York State
www.chcanys.org

FALL **2016**

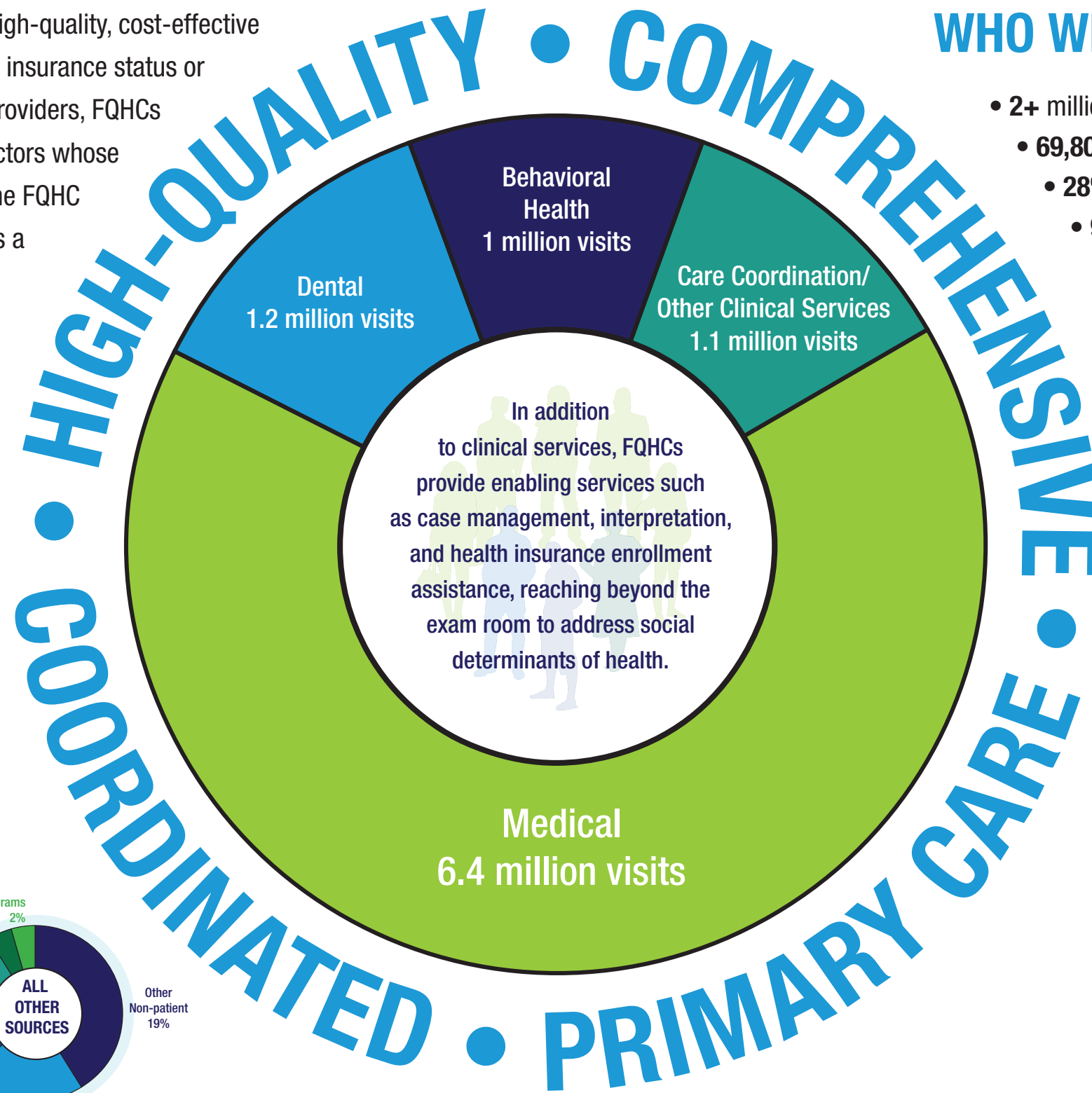
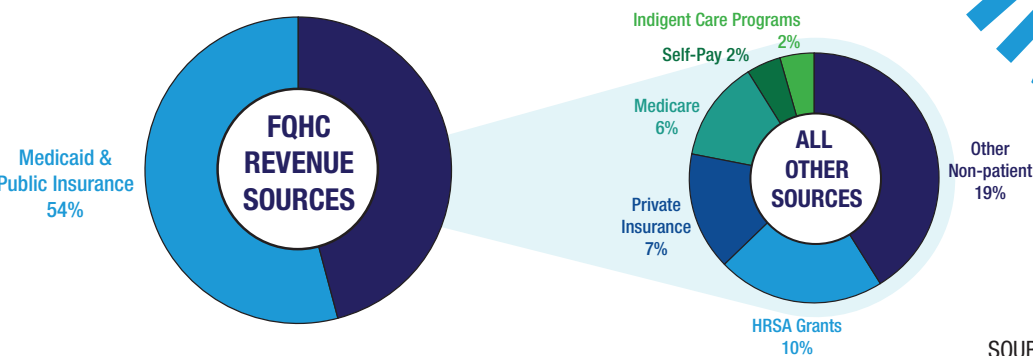
THE HEART OF HEALTHY COMMUNITIES

Federally qualified health centers (FQHC) provide high-quality, cost-effective primary care to all New Yorkers, regardless of their insurance status or ability to pay. New York's primary care safety net providers, FQHCs are governed by consumer-majority boards of directors whose priorities reflect the needs of their communities. The FQHC model of comprehensive, community-based care is a central component of state and federal healthcare delivery reform efforts.



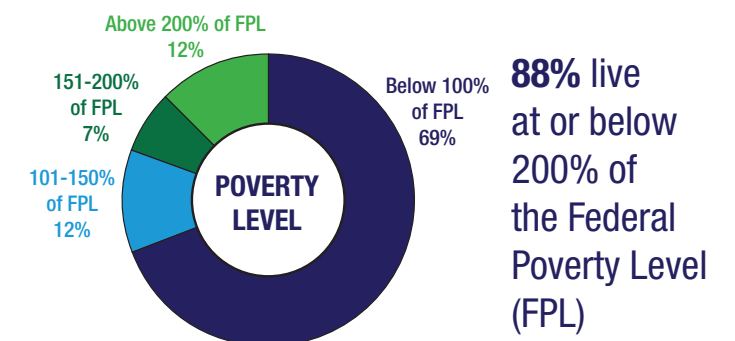
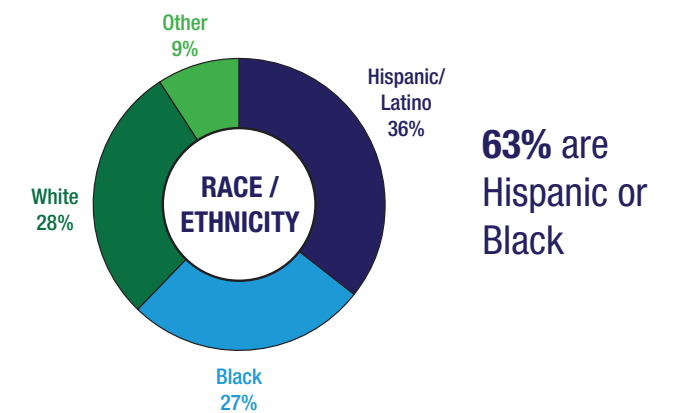
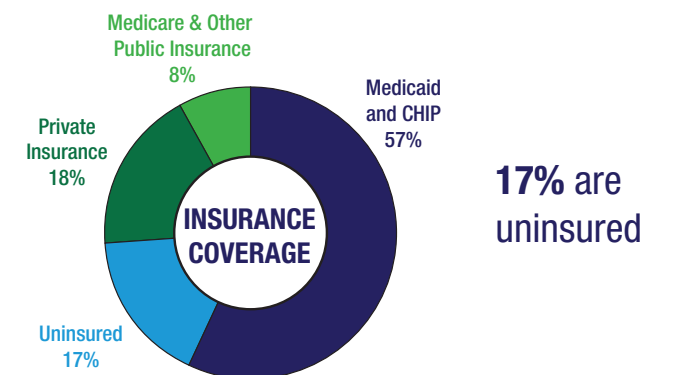
CARE COORDINATION LEADERS

70% of New York State FQHCs are NCQA Patient-Centered Medical Home (PCMH) accredited, with the majority having already attained the highest level of practice transformation (Level 3), a key requirement of the State's DSRIP program.



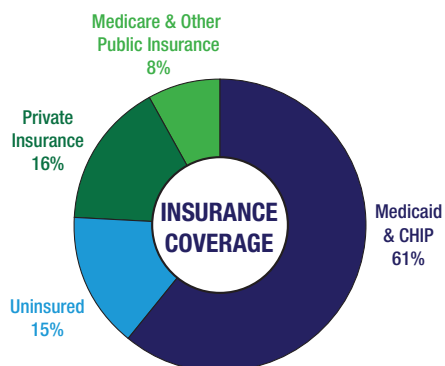
WHO WE SERVE IN NEW YORK

- 2+ million patients
- 69,800 patients are seen at school-based health centers
- 28% are best served in a language other than English
- 98,000 are homeless
- 21,600 are migrant or seasonal farmworkers

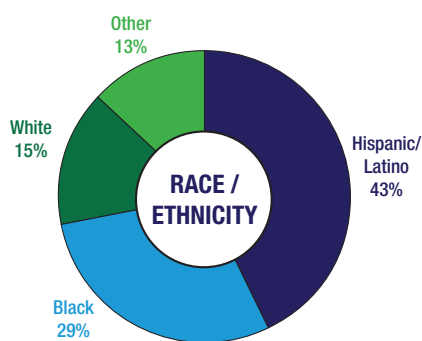


SOURCE: This fact sheet was compiled by the Community Health Care Association of New York State from 2015 HRSA Uniform Data System reports.

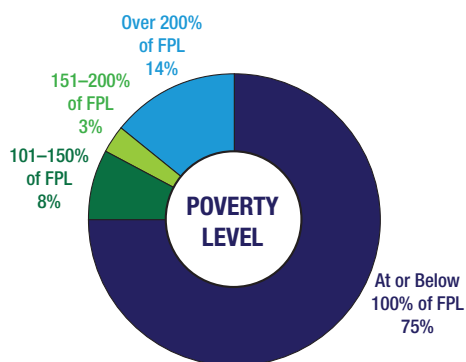
FQHC PATIENTS IN NEW YORK CITY



15% are uninsured



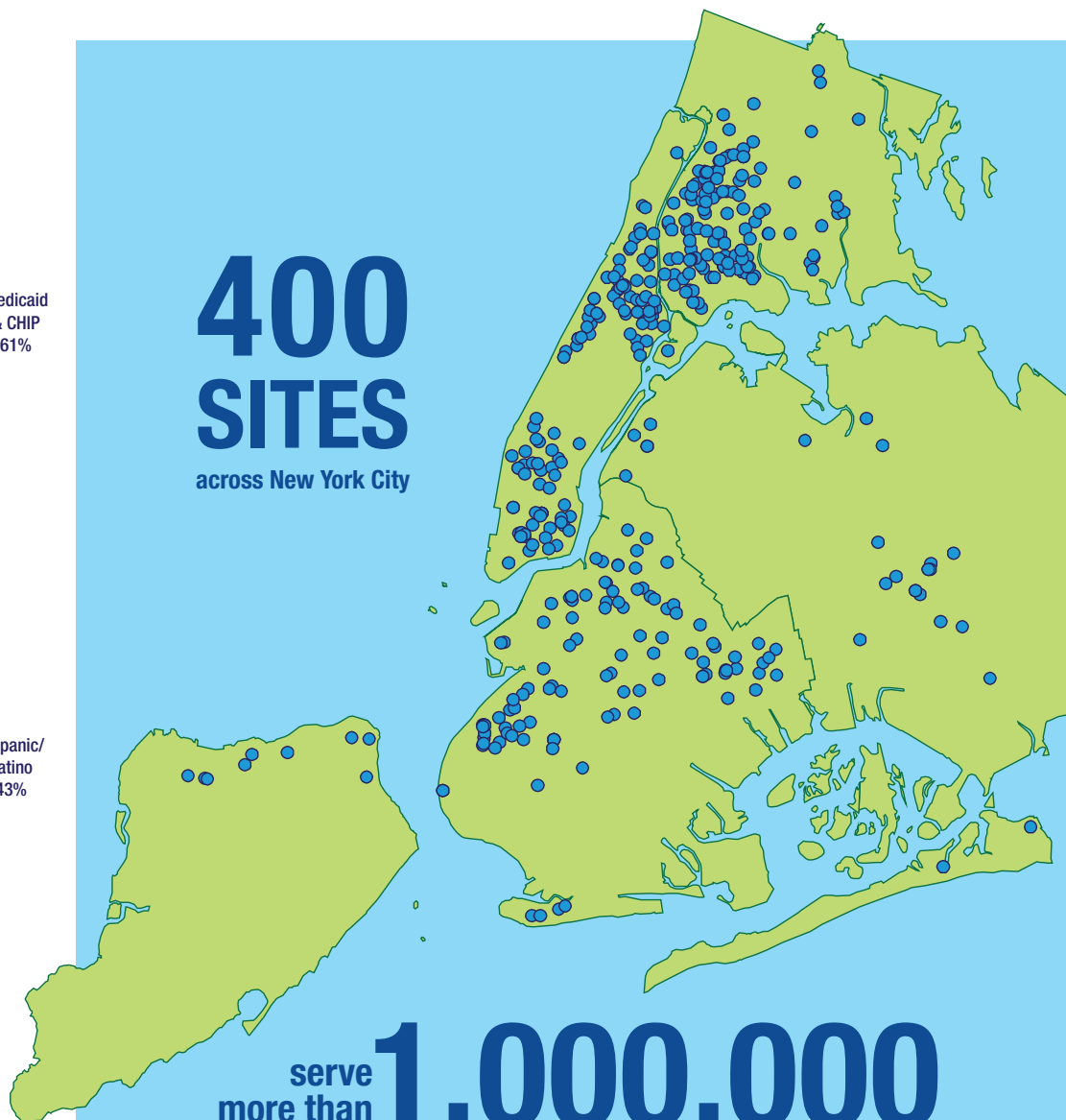
72% are Hispanic or Black



86% live at or below 200% of the Federal Poverty Level (FPL)

400 SITES

across New York City



serve more than **1,000,000** PATIENTS

- 30% are best served in a language other than English
- 73,000 are homeless
- 54,400 are seen at school-based health centers
- 88,000 are seniors (aged 65 and above)
- 364,600 are children and teenagers (under age 18)
- 107,000 receive mental health services

SOURCE: This fact sheet was compiled by the Community Health Care Association of New York State from 2015 HRSA Uniform Data System reports.

